

# Check Valve Dispensing Pump

## SV-C Series



### Dispense Volume

0-40ml

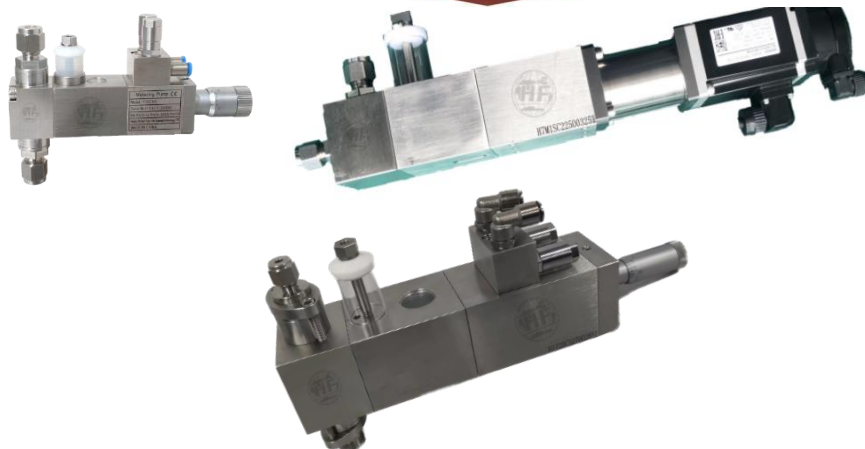
### Viscosity

Low to Medium (<20,000 cps)

No Particles

### Applications

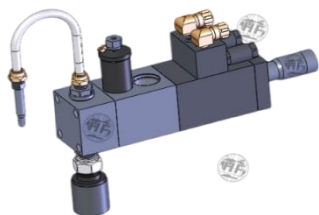
Used in the Food, Battery, Technical, Pharmaceutical, Cosmetic and Chemical industries.



## Details

### Pneumatic Drive

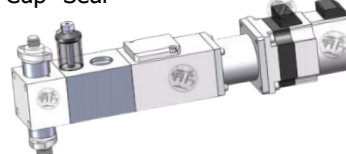
"Wet Cup" Seal



Configurable Inlet & Outlet Fittings

### Precision Servo Drive

"Wet Cup" Seal



High Accuracy  
+/- 0.5% or Better

316L Stainless Steel Construction  
Other Materials of Construction available

SMALL VOLUME DISPENSING

SCV Pump Models			Maximum Dispensing	Piston Stroke		Piston Diameter		Cycle Speed	Air Consumption	Weight
	Pneumatic	Electric	Volume (cc)	mm	inch	mm	inch	(cpm) <sup>A</sup>	scfm (l/min) <sup>B</sup>	lbs (kg) <sup>C</sup>
SV0.02C	P	E	0.02	6.35	0.25	2.01	0.08	0-300	0.3 (8.5)	5 (2.3)
SV0.05C			0.05			3.18	0.13			
SV0.1C			0.11			4.75	0.19			
SV0.2C			0.23	12.7	0.5	4.75	0.19		0.6 (17)	
SV0.4C			0.40			6.35	0.25			
SV0.6C			0.62			7.92	0.31			
SV1C			1.20			11.10	0.44			
SV2.5C			2.50			15.88	0.63			
SV3C			3.20	25.4	1	12.70	0.5	0-160	1.6 (41)	8 (3.6)
SV5C			5.00			15.88	0.63			
SV7C			7.20			19.05	0.75			
SV10C			9.80			22.23	0.88			
SV14C			14.50			26.97	1.06			
SV20C			20			31.75	1.25			
SV30C			30	38.1	1.5	31.75	1.25	0-120	3 (85)	11 (5)
SV40C			40	50.8	2	31.75	1.25			

<sup>A</sup>Depending on the application and dispensing volume, the maximum cycle rate will vary

<sup>B</sup>Calculated at full stroke at 100cpm, 75 PSI (5 Bar) <sup>C</sup> Pneumatic Drive Only

# Check Valve Dispensing Pump

## SV-C Series



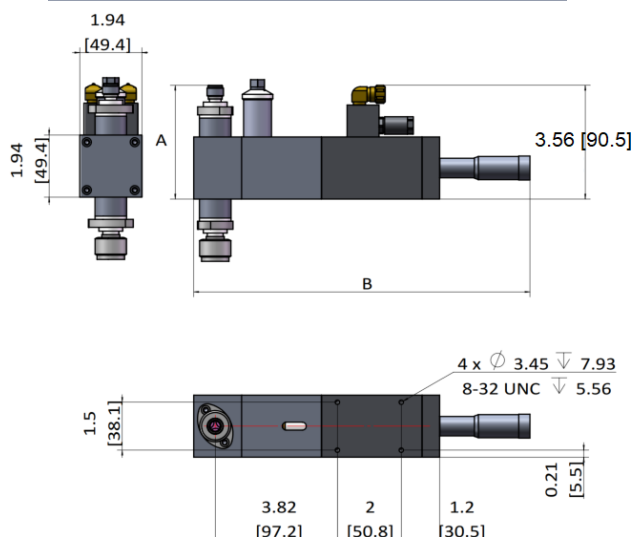
# SMALL VOLUME DISPENSING

Fittings		
Type	Size	
	Inlet	Outlet
Sanitary	1/2" - 3/4"	1/2" - 3/4"
Swage	1/8" - 1/2"	1/8" - 3/8"
Tube	1/8" - 1/2"	1/8" - 3/8"
Hose	1/2" - 3/4"	1/2" - 5/8"

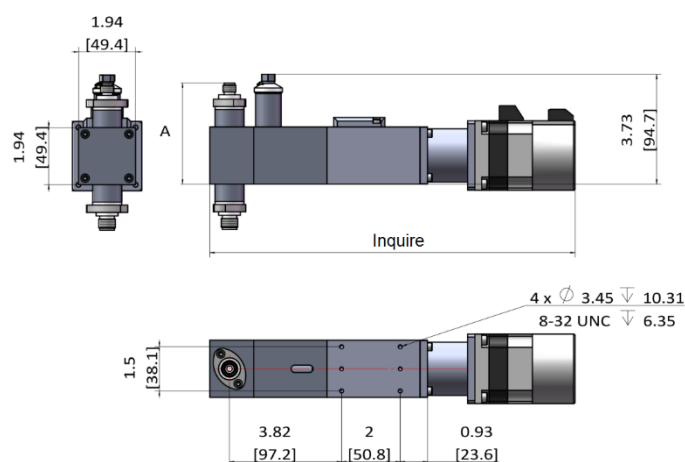
Special sizes or metric available upon request

O-rings & U-cups	
O-rings	U-cup Seals
Viton	Teflon
EP	UHMW
Silicon	
Perfluor (Kalrez ®)	

### Pneumatic Drive



### Servo Drive



SV - Small Volume CV Pump Models			Maximum Dispensing	External Dimensions Inches (mm)			
	Pneumatic	Electric	Volume (cc)	A	B	Electric	
SV0.02C	P	E	0.02	3.45 (88)	8 (203)	Servo Drive Specific Contact your Hife Rep.	
SV0.05C			0.05				
SV0.1C			0.11				
SV0.2C			0.23				
SV0.4C			0.40				
SV0.6C			0.62				
SV1C			1.20				
SV2.5C			2.50				
SV3C			3.20	3.71 (94)	10.5 (267)		
SV5C			5.00				
SV7C			7.20				
SV10C			9.80				
SV14C			14.5				
SV20C			20				
SV30C			30				14 (356)
SV40C			40				16 (406)



**HIFE KOREA CO LTD**

### Contact Us:

KOREA: [sales@hife-korea.com](mailto:sales@hife-korea.com) – CHINA: [china@hife-korea.com](mailto:china@hife-korea.com)

VIETNAM: [vietnam@hife-europe.com](mailto:vietnam@hife-europe.com)